

Installing GPSeismic Version 2011.0

This version of GPSeismic is considerably different in several ways from past installations. This document will summarize the differences and make suggestions geared towards making the transition to 2011 a smooth one.

Quick Summary

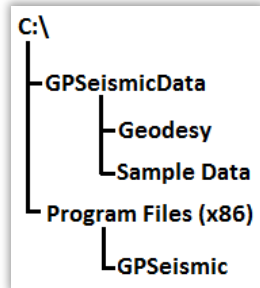
- 1) If you are installing on XP, consider installing the NET framework 3.5 beforehand.
- 2) There is now a separate GPSeismic data folder to specify.
- 3) If a Trimble user, you can install converter libraries during the install or at a later time in Project Manager. If installing on XP, consider installing these in Project Manager.

The NET Framework - If you are a Windows XP user, one of the things you can do to prepare for Version 2011 is to check what version of the NET framework you have installed. You can do this by going to Add/Remove Programs in Control Manager and scrolling down to something like 'Microsoft Net Framework...'. You might have several versions installed. What you will need for GPSeismic Version 2011 is NET Framework 3.5 or higher (If you are using Windows 7 or Vista, you probably already have it so you don't have to do anything.) When GPSeismic Version 2011 is installed it will check for NET Framework 3.5 or higher. If it does not find it, it will install it from the internet. However, if you don't have an internet connection when you install, pre-installing NET Framework 3.5 could save some time. The link to the Microsoft page where you can download 3.5 is [here](#) .

Folder Installation Changes - Before listing the new changes, it is first necessary to understand why the changes are required. When Windows Vista and Windows 7 systems are purchased, the operating system software has a security feature turned on call UAC which stands for User Account Control. This feature can be tuned off at any time (See Appendix A). When it is on, Windows protects certain folders by making them read-only. This includes the 'Program Files', 'Program Files (x86)' and 'Windows' folders. If a user saves a file in any read only folder, it appears the file is saved but what actually happens is that the file is saved in a different folder buried deep in the 'Users' folder structure. This can be confusing to the user if he or she tries to find the file with Explorer. Again, simply turning off UAC cures all these problems, but with the release of 2010.4 we began to take steps to accommodate it if the user decides to leave it on.

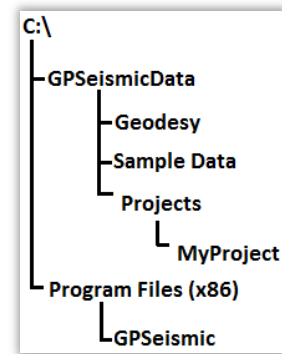
In the 2010.4 version of GPSeismic, we began reading and writing all program settings to the system registry rather than INI files. INI files are ASCII files in the Windows folder. By reading and writing to the registry, we made one step towards accommodating Windows 7 UAC since it makes the Windows folder read only. However, version 2010.4 is still not fully UAC compatible since by default, the geodetic

database and project files are both stored in the 'Program Files' folder. We open databases with read/write access so with UAC on, trying to access the geodetic database, or any database for that matter, will fail if they are in the write protected 'Program Files' (or x86) folder.

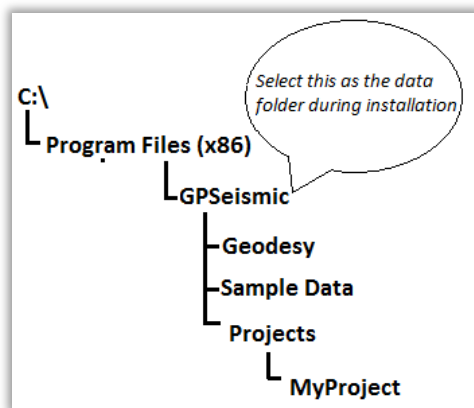


The GPSeismic Version 2011 installation will offer both an installation path for the application software (as it has in the past), but also prompt for a 'GPSeismicData' path. The default will be right off of the root drive. So if your root drive is 'C:\', the default will be 'C:\GPSeismicData'. In this folder will be a 'Geodesy' subfolder with the geodetic database and relevant shift files, and a 'Sample Data' subfolder with our standard set of sample files. So diagrammatically, you will have what you see on the left here.

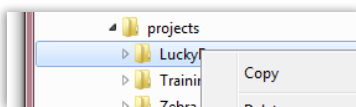
With 2011, there is also a change in where projects are created by default. In the past, the default was to create a sub-folder to GPSeismic called 'Projects' and all new projects were created in their own sub-folder of that. Now the default will be to create a folder underneath 'GPSeismicData' (or the user's selected data folder) called Projects and to create each new project in a sub-folder of that, similar to what you see here on the right.



Options for Users With Existing Projects Under the GPSeismic Folder



If you have existing projects, there are a couple ways to handle this. First, if you simply want to turn UAC off, you can operate as you have been if you do one thing during the installation. When prompted for the GPSeismic data folder, rather than the 'C:\GPSeismicData' default, you could select the GPSeismic install folder. In this way, nothing really changes from how it was in the past. The 'geodesy' folder will be created here and when new projects are created, the default will be where they have always been.



- Another option is to go with the default 'C:\GPSeismicData' folder during the installation then start Project Manager and select the Projects menu item, Remove All Projects. Once done, start Explorer and move the entire 'Projects' folder (and all sub-folders) to the GPSeismicData folder. Finally, go back to Project Manager and choose Import Project for each project, thereby re-establishing the path to each.

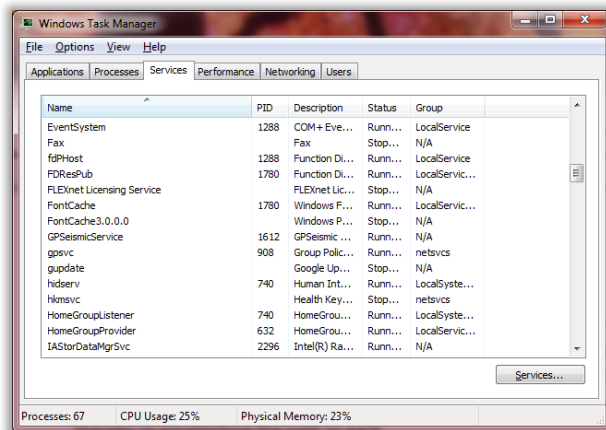
Copy Project To GPSeismicData Folder...

- Another option is to use a utility in Project Manager to copy projects from one location to another. This utility is to assist in copying projects that are located in \GPSeismic\Projects\ sub-folders to \GPSeismicData\Projects\ sub-folders. The utility tries to correctly initialize the source and destination folders based on the project selection. However, there is no guarantee that this will work for every user so 'browse to' buttons allow the user to manually select folders if required. While the project is copied to a new location, it will not delete the source folder. This action is left to the user. The amount of data in the source and the amount copied is listed so as to assist the user in determining if he or she can safely delete the source folder.

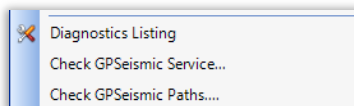
Trimble Device Updater Option

At the end of the installation, there will be two checkboxes. One is for the security key software. Check this if GPSeismic is being installed for the first time on your system. The other is to install the necessary Trimble device libraries. In order for QuikLoad and QuikView to read and write Trimble JOB files, you will have to either select this option or you can do this at a later time in Project Manager. If you are installing on XP, consider installing the device libraries from the Preferences menu in Project Manager after the installation is complete.

New GPSeismic Service



Once GPSeismic Version 2011.0 is installed, each time your computer is started, a service (called GPSeismicService.exe) will automatically be run. You should know that this is required for several registry functions. Registry functions require elevated user privileges and this service insures you have those privileges, even if UAC is turned on. You can actually see the service running if you start Task Manager and display the Services tab page.



Project Manager has several new functions that help in determining if the GPSeismic Service is running and diagnosing problems with other aspects of the installation. These utilities are at the bottom of the

Utilities menu.

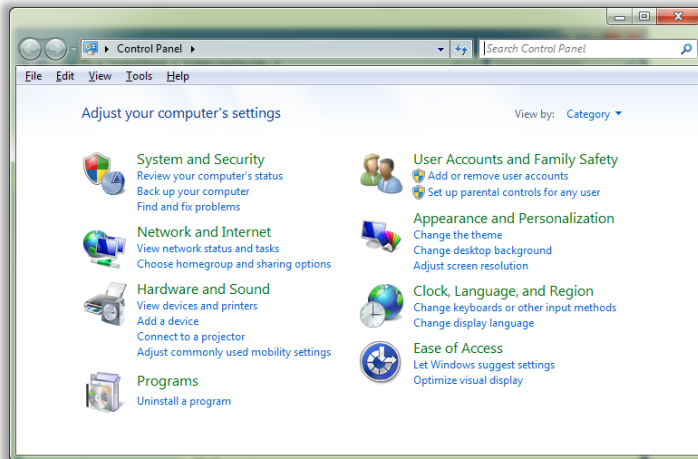
Diagnostics Listing – This will produce a report of installed GPSeismic applications and libraries along with their compile date, feedback on the state of the GPSeismic service, and several key registry settings. The latter includes where the geodetic database is located and the installation folder.

If the GPSeismic service is found to be stopped or not installed, a prompt will ask you if you want to fix the problem. If you answer Yes, then a dialog will be displayed allowing you to run the service or, if necessary, install it. If either the path to the geodetic database is missing, or the installation path is incorrect, a prompt will ask if you want to fix the problem. If you answer Yes, then a dialog will be issued that allows you to set the path to the geodetic database, or correct the installation path.

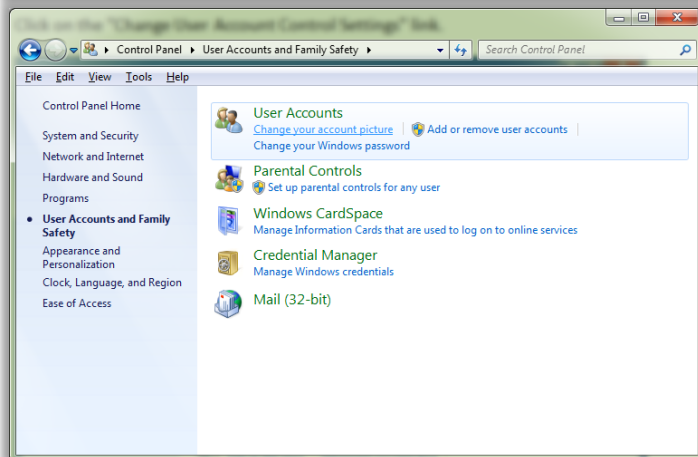
Both dialogs mentioned above can be accessed by selecting the 'Check GPSeismic Service...' and 'Check GPSeismic Paths...' menu items.

Appendix A - Disabling User Account Control (UAC) on Windows 7

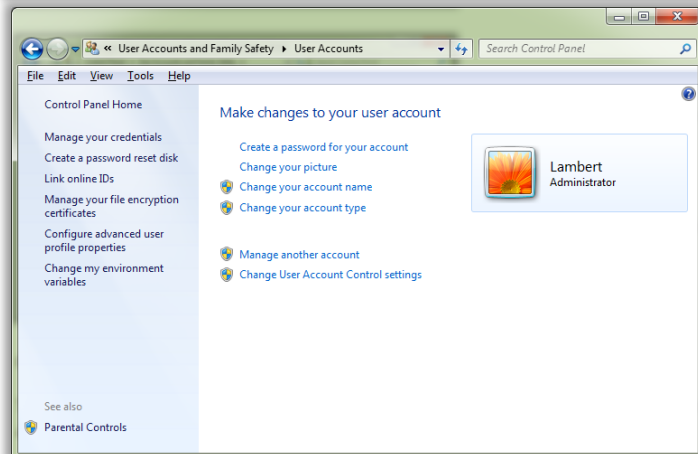
(Only needed if you choose to store projects and the geodetic database under Program Files)



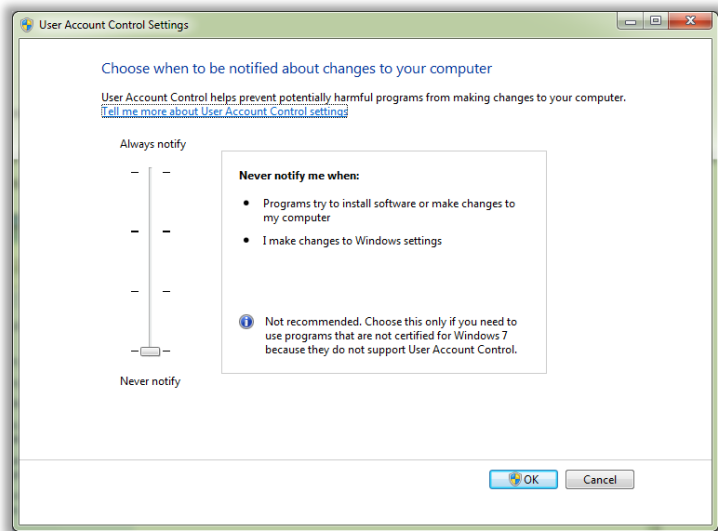
Press the Start button and select Control Panel. Then Select User Accounts and Family Safety.



Click on the "User Accounts" link.



Click on "Change User Account Control Settings".



To turn off UAC, move the slider to the Never notify position, and then click OK. If you're prompted for an administrator password or confirmation, type the password or provide confirmation.

You will need to restart your computer for UAC to actually be turned off.